

## EXECUTIVE SUMMARY

2011 HURRICANE IRENE

# ELEUTHERA ISLAND, BAHAMAS

## RAPID DAMAGE ASSESSMENT



PATHFINDERS  
TASK FORCE

Pathfinders Task Force, supported by The Eagles' Wings Foundation completed a Rapid Damage Assessment of Eleuthera Island, Bahamas on D+1 following Hurricane Irene. Rapid Damage Assessments contain information about individual structures and classify structural damage based on Type and Damage Condition. Geo-tagged photos are also attached to each Assessment, providing a picture of where critical areas are and what resources to allocate towards them.

### — INITIAL ASSESSMENT - Saturday, August 27<sup>th</sup>, 2011

488

Total Rapid Damage  
Assessments

443

Structures were  
Affected

40

Structures  
Sustained  
Minor Damage

5

Homes and other Structures  
with Major Damage

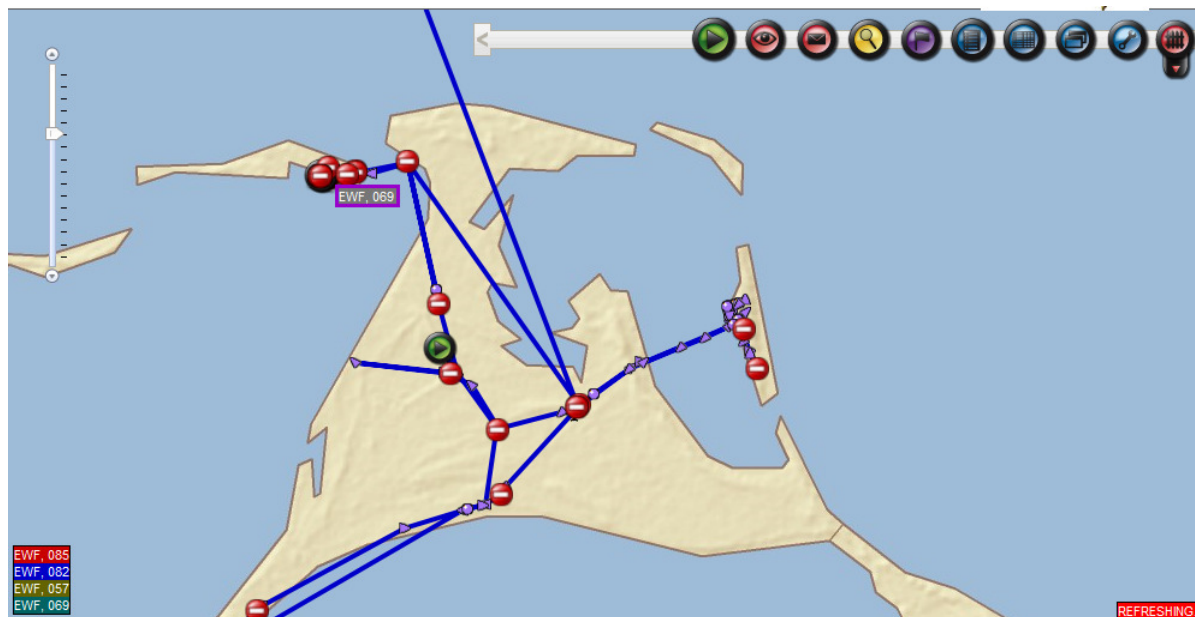
On D + 1, following a tasking request by Capt. Russell, the Bahamian NEMA Director, Pathfinders' Task Force (PTF) deployed two, Type V teams into the NE Bahamas Islands – one each to Abaco and Eleuthera.

PTF focused on providing Situational Awareness reports to NEMA for its field Ops on D + 2. The PTF teams geotagged (GPS located damage) 1,500+ photos and reports from Foxtown to Sandy Point on Abaco, and on Eleuthera, PTF geotagged about 500 reports from Spanish Wells to Green Castle.

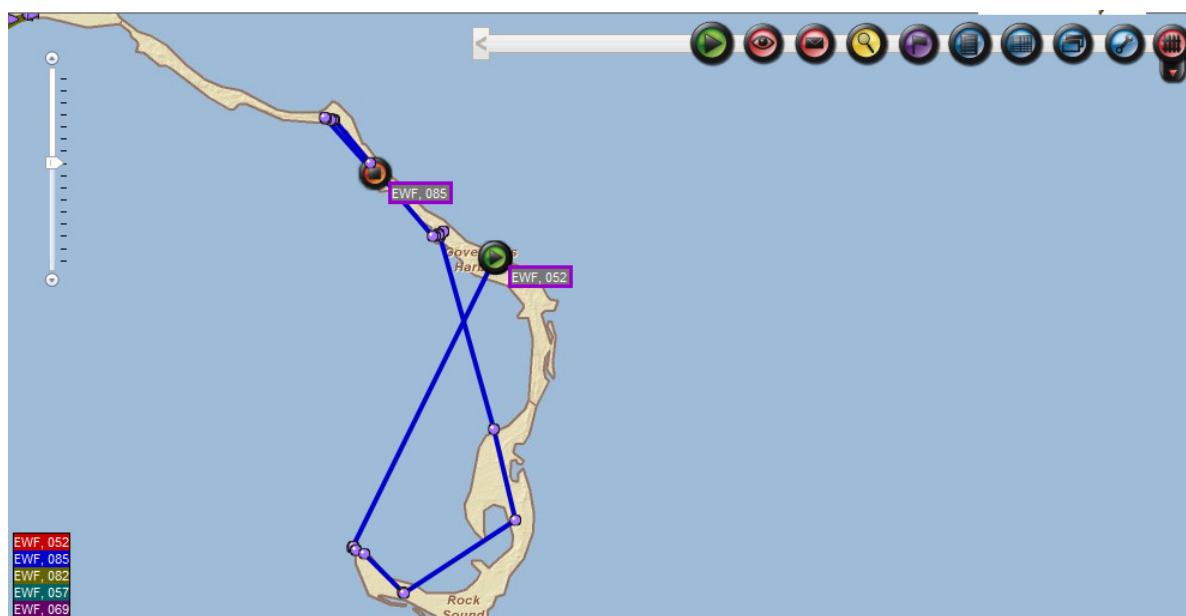
This PTF Summary includes GPS Tracking history, Google Earth sample views of geotagged field reports, and sample geotagged photos taken on Abaco.

Following these initial Sit Reps, Pathfinders will engage in Mass Distribution operations under the direction of NEMA for incoming, donated, relief supplies from The Eagles Wings Foundation.

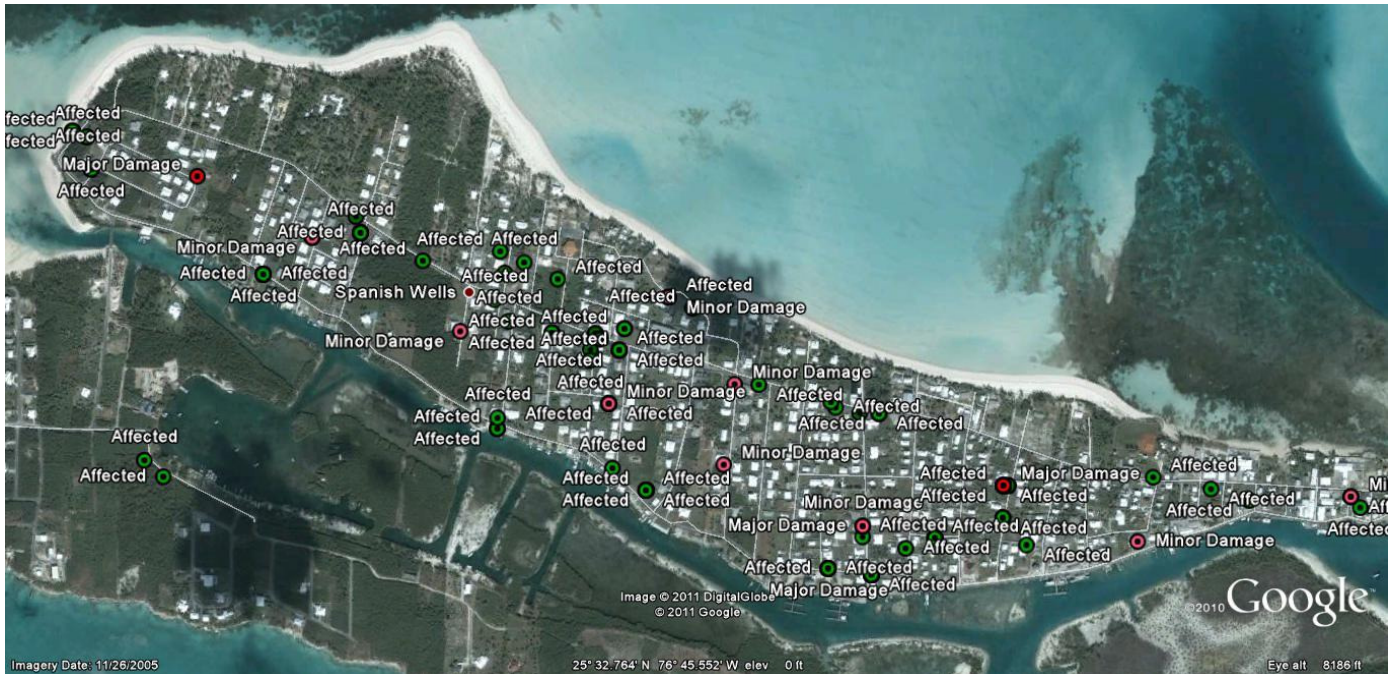
## GPS Track History of Pathfinder Responders—Northern Eleuthera Island



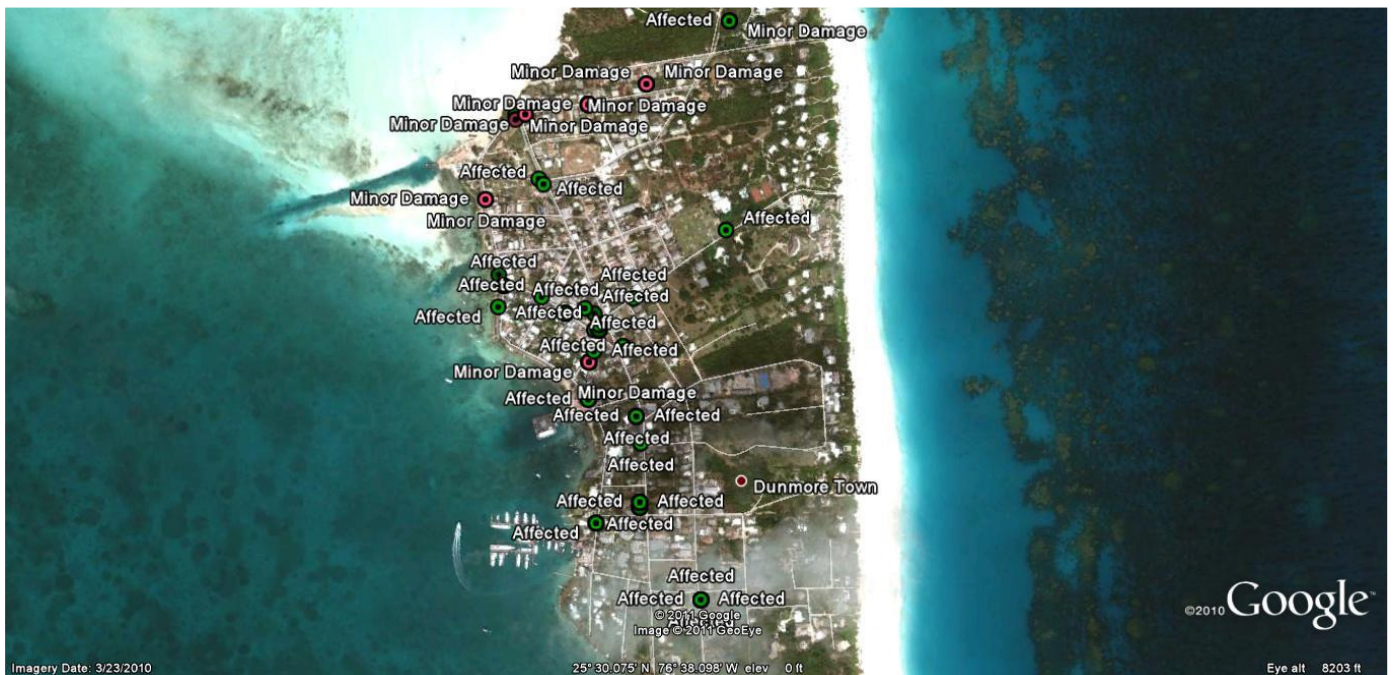
## GPS Track History of Pathfinder Responders – Southern Eleuthera Island



## Spanish Wells Rapid Damage Assessments

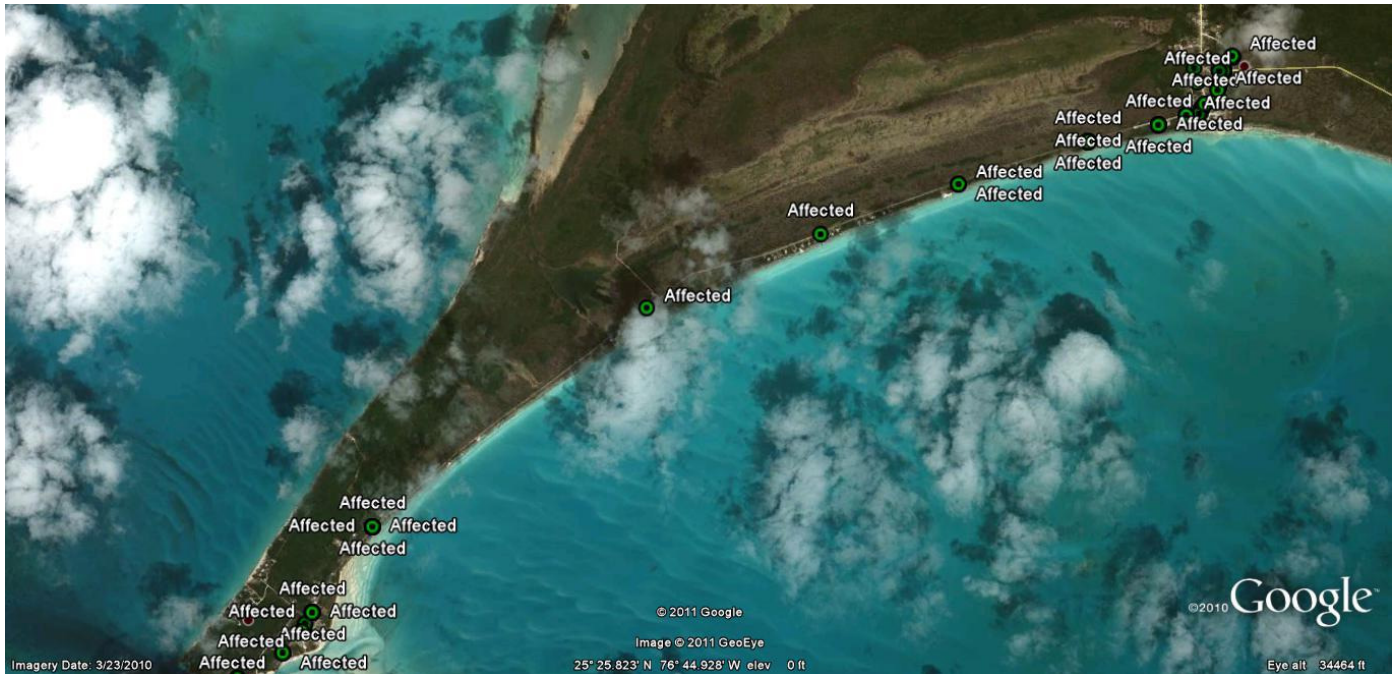


## Dunmore Town Rapid Damage Assessments

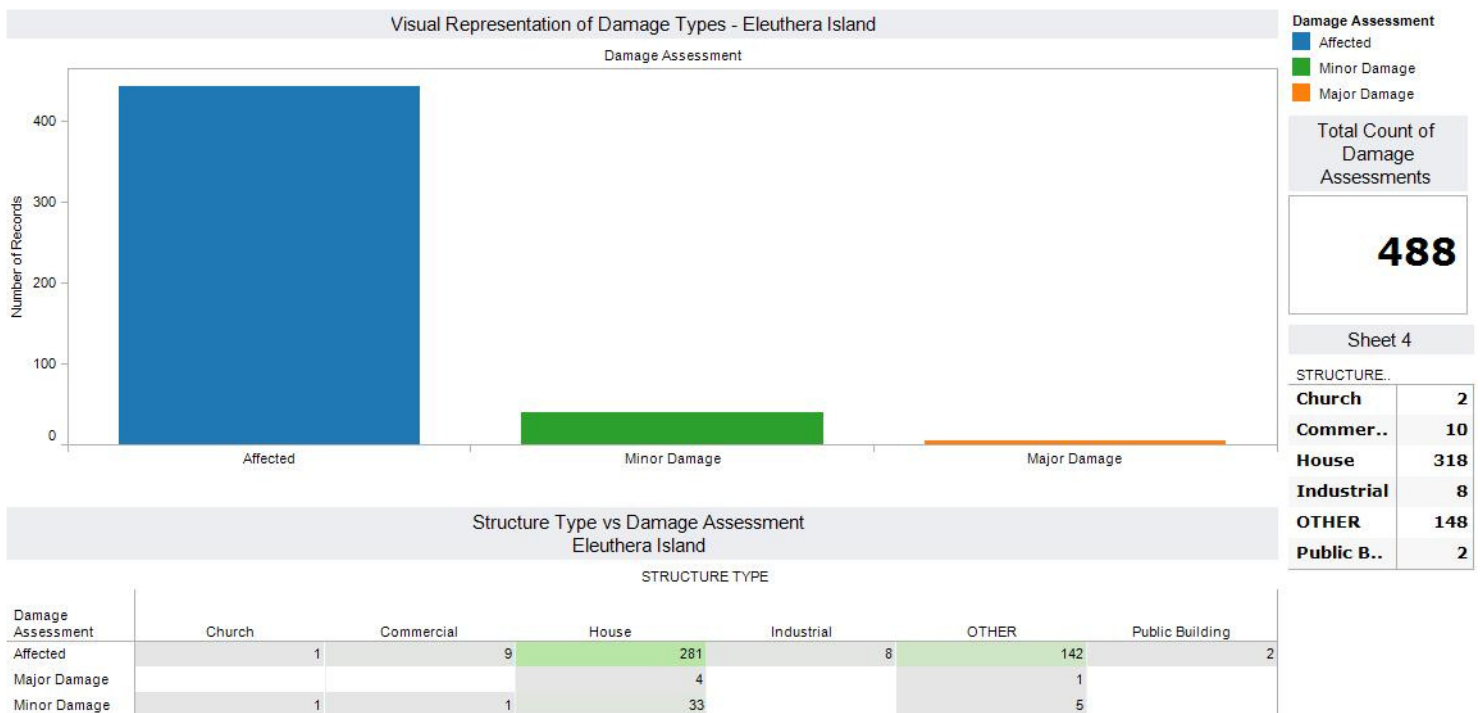




## Lower Bogue and Current Town Rapid Damage Assessments



## Detailed Pathfinders Statistics for Eleuthera Island Rapid Damage Assessments

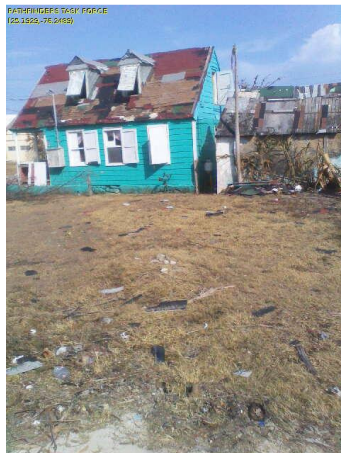




Destroyed Airplane  
(25.2765 -76.3221)



Destroyed House  
(25.1933 -76.2511)



Major Damage to House  
(25.1929 -76.2489)



House Destroyed  
(25.1967 -76.2439)



House - Minor Damage  
(25.5453 -76.7586)



House - Minor Damage  
(25.5462 -76.7641)



Dock Area Damaged  
(25.5419 -76.7564)



Affected Power Lines  
(25.5464 -76.7631)





**Broken Communications Pole**  
*(25.4735 -76.6957)*



**Broken Communications Pole**  
*(25.5449 -76.761)*



**Broken Fence**  
*(25.5469 -76.7598)*



**Stranded Boat**  
*(25.5425 -76.7500)*



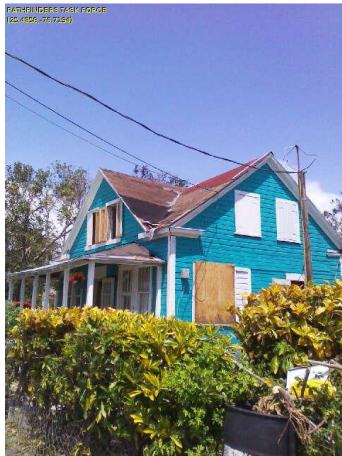
**Destroyed Property**  
*(25.5419 -76.7564)*



**House - Major Damage**  
*(25.5427 -76.7557)*



**House - Minor Damage**  
*(25.549 -76.7696)*



**House - Minor Damage**  
*(25.4858 -76.7194)*



Affected Power Lines  
(24.834-76.3387)



Downed Power Lines  
(25.3265-76.3681)



Downed Power Lines  
(25.3265 -76.3681)



Affected Power Lines  
(25.1929-76.2489)



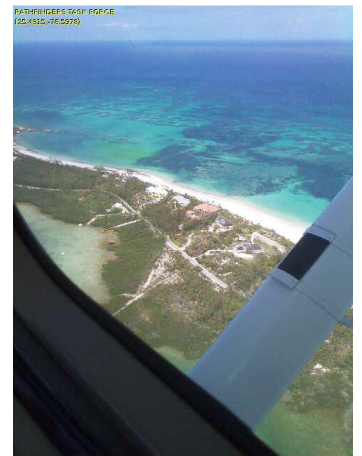
Eleuthera Island  
Aerial Recon



Eleuthera Island  
Aerial Recon



Eleuthera Island Airport  
Aerial Recon



Eleuthera Island  
Aerial Recon



## ABOUT **PATHFINDERS' TASK FORCE**

---

*Pathfinders Task Force uses its revolutionary Pathfinders' Eureka software that allows field responders to collect data from simple cell phones in a standardized format, even in a 100% disconnected environment (no cellular, wireless, or internet service & no electricity). All responders are GPS tracked and generate a history bread crumb trail that displays submitted data.*

*Pathfinders Task Force is a Mass Care, Typed resource under the Florida Division of Emergency Management. The two, PTF Type V, Liaison teams which performed these missions consisted of 6 credentialed responders. Personnel on this PTF team were deployed into the 2010 Haitian Earthquake, the BP Oil Spill, the 2011 Japanese Earthquake, and the 2011 Mississippi floods and tornadoes.*



**Developed by**

Disaster Solutions Pathfinders Taskforce

**Call 202 681 5205**