

# EXECUTIVE SUMMARY

2011 HURRICANE IRENE

## ABACO ISLAND, BAHAMAS

### SWEAT - MS ASSESSMENT



PATHFINDERS  
TASK FORCE

Pathfinders Task Force, supported by The Eagles' Wings Foundation, began a critical infrastructure survey based on the SWEAT-MS Assessment (Sewer, Water, Electricity, Academics, Transportation, Medical, and Security) as part of the initial damage assessment following Hurricane Irene. Data describes the current state of functionality for the type of SWEAT-MS, categorized as GREEN, YELLOW, or RED, and contains a geo-tagged photo for each assessment.

## INITIAL ASSESSMENT

43

GREEN

(Infrastructure Generally  
Functioning)

27

YELLOW

(Infrastructure is Functioning  
with Significant Issues)

13

RED

(Infrastructure is NOT  
Functioning)

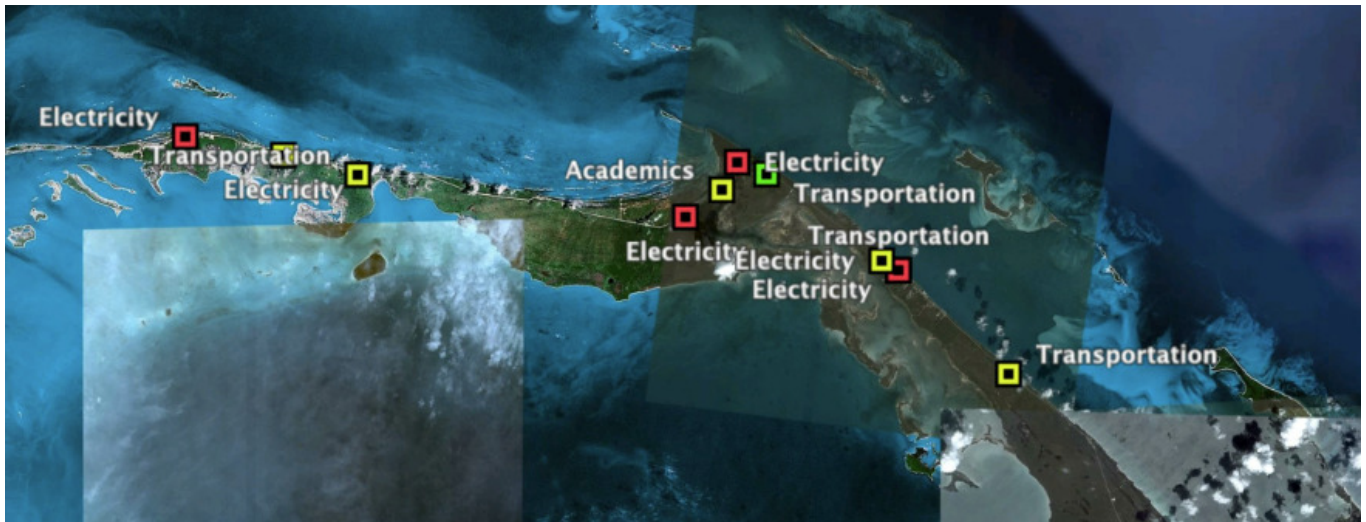
- On D + 1, following a tasking request by Capt. Russell, the Bahamian NEMA Director, Pathfinders Task Force (PTF) deployed two Type V teams into the NE Bahamas Islands – one each to Abaco and Eleuthra.
- PTF focused on providing Situational Awareness reports to NEMA for its field Ops on D + 2. The PTF teams geotagged (GPS located damage) 1,500+ photos and reports from Foxtown to Sandy Point on Abaco, and on Eleuthra, PTF geotagged over 1,000 reports from Spanish Wells to Green Castle.
- This PTF Summary includes GPS Tracking history, Google Earth sample views of geotagged field reports, and sample geotagged photos taken on Abaco.
- A Critical Infrastructure Report from Abaco and a Rapid Damage Assessment Report from Eleuthra will follow separately. Following these initial Sit Reps, Pathfinders will engage in Mass Distribution operations under the direction of NEMA for incoming, donated, relief supplies from The Eagles Wings Foundation.

Developed by

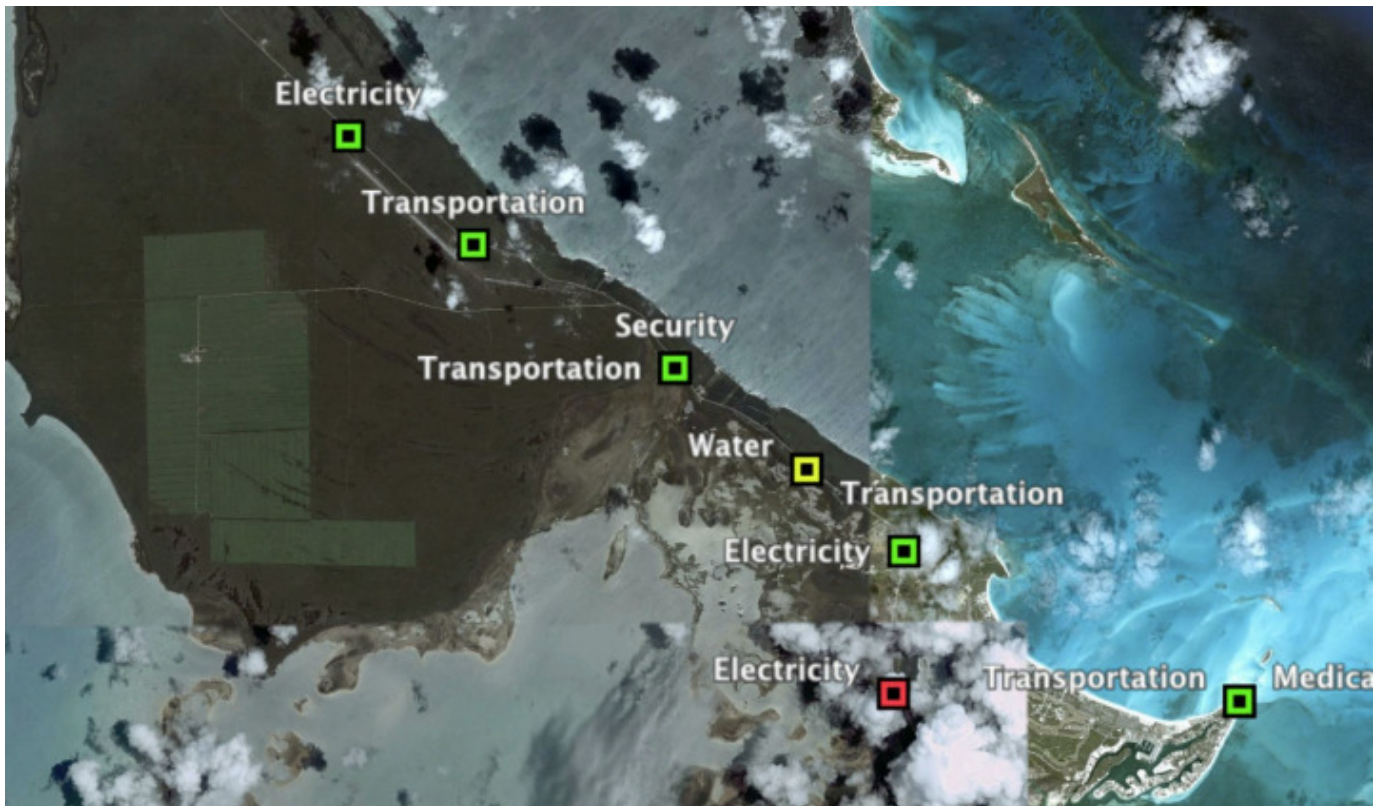
Disaster Solutions Pathfinders Taskforce

Call 202 681 5205

## Little Abaco Island SWEAT- MS Assessments

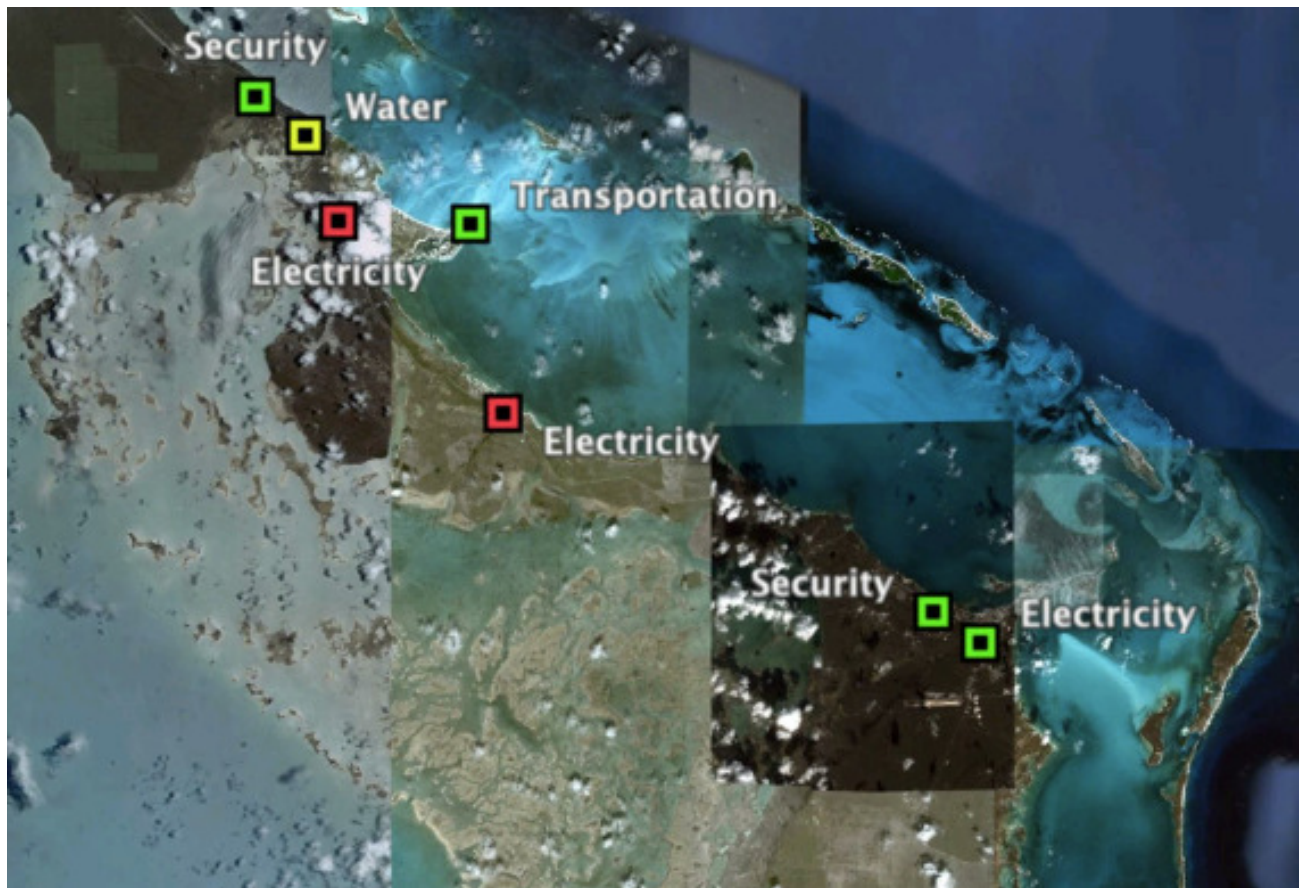


## Treasure Cay and North Abaco Island - SWEAT- MS Assessments





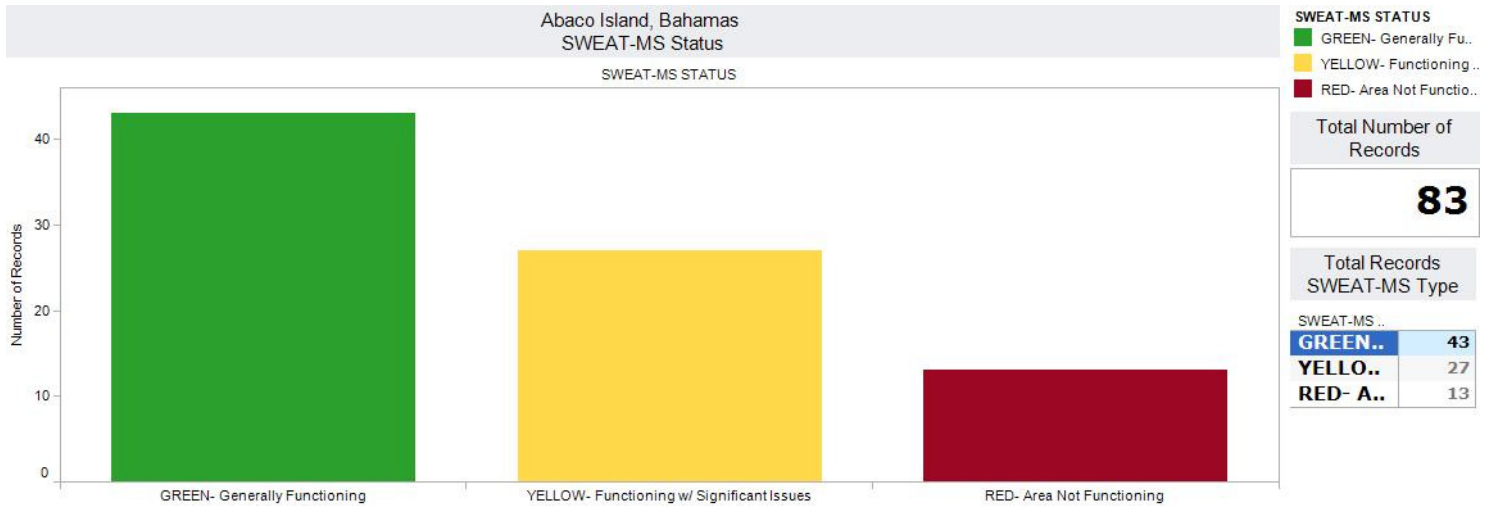
## Marsh Harbor Area SWEAT- MS Assessments



## Sandy Point SWEAT- MS Assessments



## Detailed Pathfinders Statistics for Abaco Island SWEAT-MS Assessments



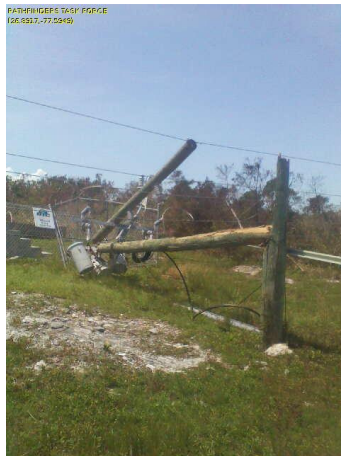
Abaco Island, Bahamas  
SWEAT-MS Type vs SWEAT-MS Condition

SWEAT-MS STATUS	SWEAT-MS TYPE					
	Water	Electricity	Academics	Transportation	Medical	Security
GREEN- Generally Functioni..	1	18	8	10	1	5
YELLOW- Functioning w/ Sl..	1	4	3	19		
RED- Area Not Functioning		12		1		





Flooding at  
Marsh Harbor Airport  
Transportation – YELLOW



Major Transformer Line  
Destroyed ESE of Cedar  
Harbor - Electricity - RED



Tree Blocking Road NW of  
Treasure Cay –  
Transportation - YELLOW



Downed Power Lines near  
Treasure Cay –  
Electricity - RED



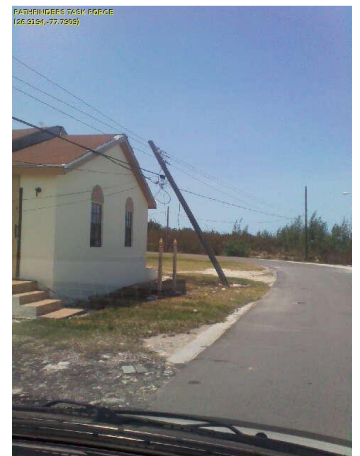
Downed Power Lines near  
Foxtown –  
Electricity - RED



Downed Power Lines SE of  
Treasure Cay –  
Electricity – RED



Broken Power Lines in  
Coopers Town—  
Electricity – RED



Downed Power Lines near  
Foxtown --  
Electricity - RED



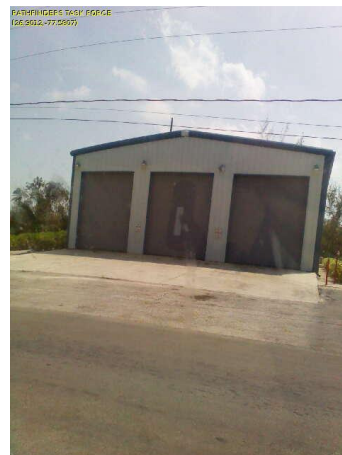
Downed Power Lines in  
Treasure Cay –  
Electricity - RED



Aerial Recon PTF Photo of  
Hopetown



Murphy Town Police Station  
Security - GREEN



Marsh Harbor Fire Station  
Security - GREEN



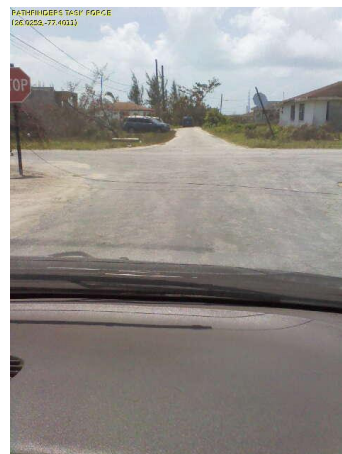
Fuel Tanks OK in  
Treasure Cay  
Transportation - GREEN



Destroyed Govt. Dock in  
Coopers Town  
Transportation – RED



Partially Flooded Road SE of  
Coopers Town  
Transportation – YELLOW



Downed Power Lines near  
Sandy Point --  
Electricity - RED



## ABOUT **PATHFINDERS TASK FORCE**

---

*Pathfinders Task Force uses its revolutionary software that allows field responders to collect data from simple cell phones in a standardized format, even in a disconnected environment (no cellular, wireless, or internet service & no electricity). All responders are GPS tracked and generate a history breadcrumb trail that displays submitted data.*

*Pathfinders Task Force is a Mass Care, Typed resource under the Florida Division of Emergency Management. The two, PTF Type V, Liaison teams which performed these missions consisted of 6 credentialed responders. Personnel on this PTF team were deployed into the 2010 Haitian Earthquake, the BP Oil Spill, the 2011 Japanese Earthquake, and the 2011 Mississippi floods and tornadoes.*

